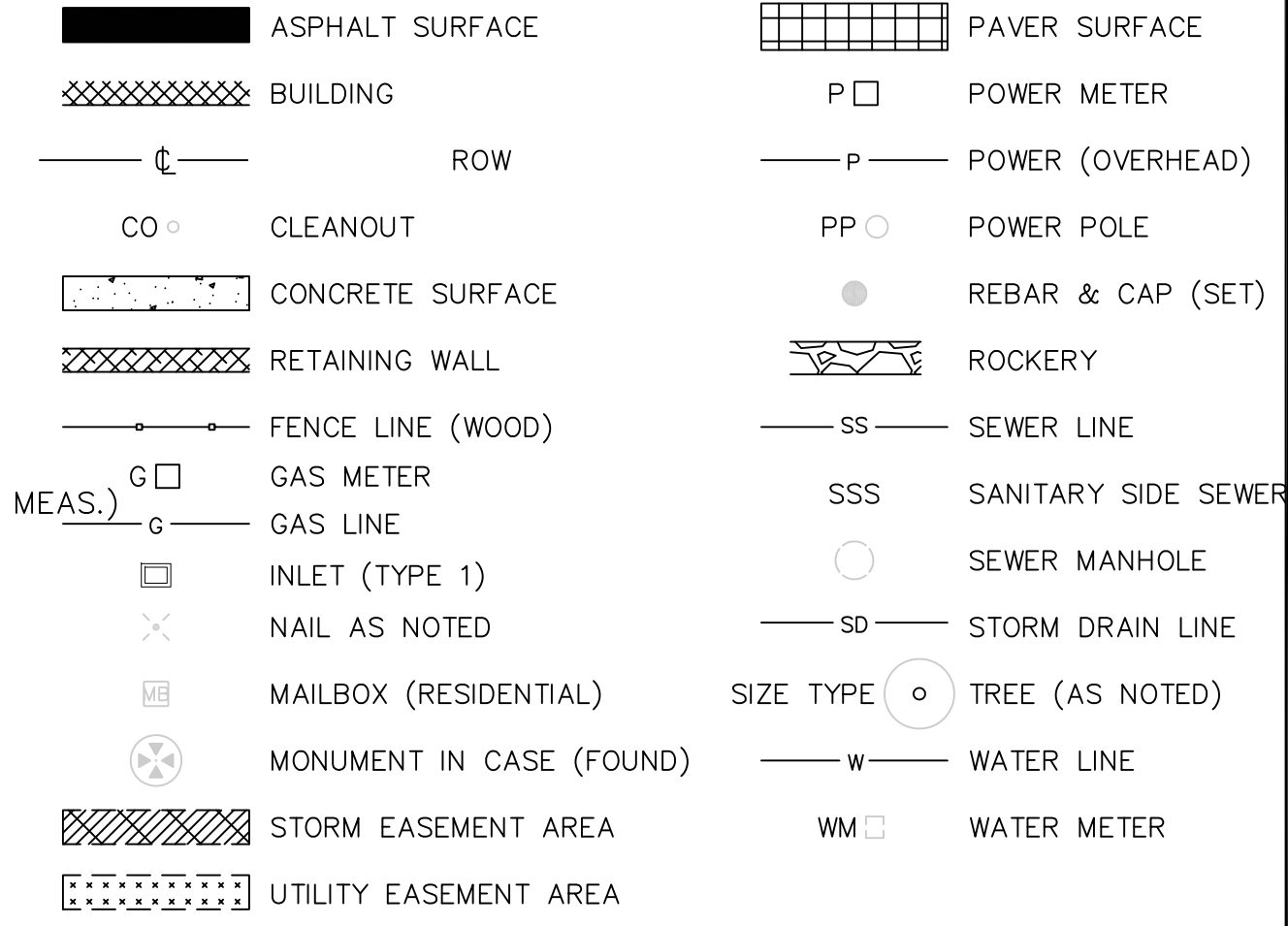
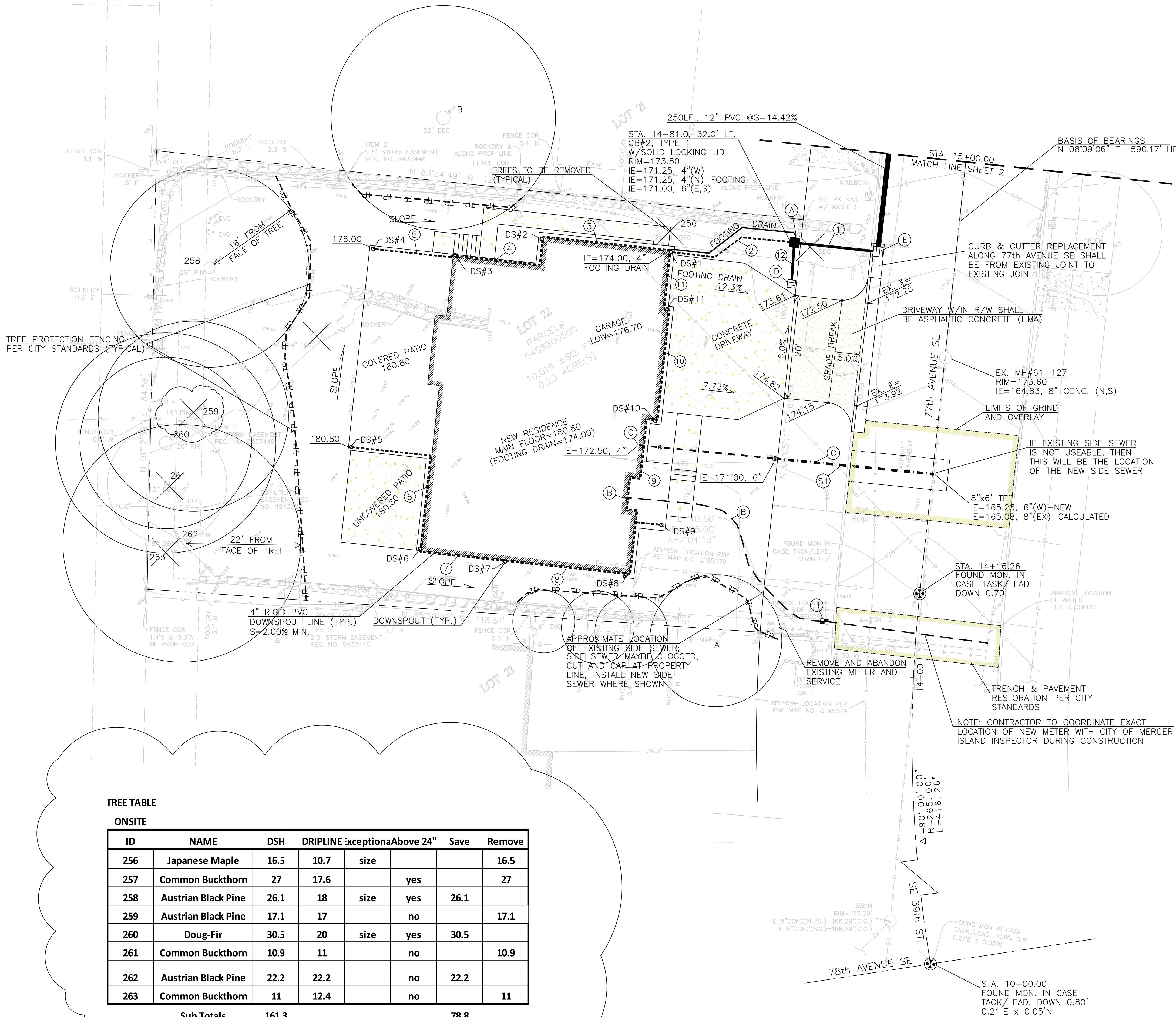


SW 1/4 OF THE SE 1/4 OF SECTION 12, TOWNSHIP 24 NORTH., RANGE 4 EAST, W.M., KING COUNTY, WA.

NOTE: THE LAWN AND LANDSCAPE AREAS ARE REQUIRED TO PROVIDE POST-CONSTRUCTION SOIL QUALITY AND DEPTH IN ACCORDANCE WITH BMP T5.13. THE PROJECT CIVIL ENGINEER MUST PROVIDE A LETTER OF CERTIFICATION TO ENSURE THAT THE LAWN AND LANDSCAPE AREAS ARE MEETING THE POST-CONSTRUCTION SOIL QUALITY AND DEPTH REQUIREMENTS SPECIFIED ON THE APPROVED PLAN SET PRIOR TO FINAL INSPECTION OF THE PROJECT.

EXISTING UTILITY LOCATIONS SHOWN HEREON ARE APPROXIMATE ONLY. IT SHALL BE THE CONTRACTOR'S RESPONSIBILITY TO DETERMINE THE EXACT VERTICAL AND HORIZONTAL LOCATION OF ALL EXISTING UNDERGROUND UTILITIES PRIOR TO COMMENCING CONSTRUCTION. NO REPRESENTATION IS MADE THAT ALL EXISTING UTILITIES ARE SHOWN HEREON. THE ENGINEER ASSUMES NO RESPONSIBILITY FOR UTILITIES NOT SHOWN OR UTILITIES NOT SHOWN IN THEIR PROPER LOCATION.  
CALL BEFORE YOU DIG: 811



- NOTES:
- (A) FOOTING DRAIN CONNECTION, IE=171.25, 4"
  - (B) INSTALL NEW 1" WATER SERVICE AND METER
  - (C) NEW SIDE SEWER
  - (D) CB#3, TYPE 1 W/OIL WATER SEPARATOR GRATE=173.50 OVERFLOW=173.25, 6" IE=171.50, 6"(N) BOTTOM OF TEE=171.00, 6"
  - (E) STA. 14+81.0, 15.0' LT. CB#1, TYPE 1 W/VANED GRATE INLET GRATE=171.41 IE=169.00, 6"(W) IE=168.40, 12"(N)

STORM PIPE TABLE		DOWNSPOUT TABLE	
①	17LF., 6" PVC SDR-35 @ S=11.76%	DS#1	GROUND=176.70 DOWNSPOUT LINE=173.00, 4"
②	24LF., 4" PVC SDR-35 @ S=7.29%	DS#2	GROUND=176.00 DOWNSPOUT LINE=174.15, 4"
③	27LF., 4" PVC SDR-35 @ S=2.00%	DS#3	GROUND=176.00 DOWNSPOUT LINE=174.63, 4"
④	22LF., 4" PVC SDR-35 @ S=2.00%	DS#4	GROUND=176.00 DOWNSPOUT LINE=174.95, 4"
⑤	16LF., 4" PVC SDR-35 @ S=2.00%	DS#5	CONCRETE=180.80 DOWNSPOUT LINE=179.45, 4"
⑥	32LF., 4" PVC SDR-35 @ S=2.00%	DS#6	CONCRETE=180.80 DOWNSPOUT LINE=178.80, 4"
⑦	17LF., 4" PVC SDR-35 @ S=2.00%	DS#7	GROUND=179.30 DOWNSPOUT LINE=178.46, 4"
⑧	24LF., 4" PVC SDR-35 @ S=2.00%	DS#8	GROUND=179.30 DOWNSPOUT LINE=177.95, 4"
⑨	38LF., 4" PVC SDR-35 @ S=8.03%	DS#9	CONCRETE=180.60 DOWNSPOUT LINE=179.00, 4"
⑩	23LF., 4" PVC SDR-35 @ S=2.00%	DS#10	GROUND=176.50 DOWNSPOUT LINE=174.90, 4"
⑪	12LF., 4" PVC SDR-35 @ S=6.25%	DS#11	CONCRETE=176.70 DOWNSPOUT LINE=174.40, 4"
⑫	8LF., 6" PVC SDR-35 @ S=6.25%		
SEWER PIPE TABLE			
(S1)	31LF., 6" PVC SDR-35 @ S=18.55%		
(S2)	27LF., 4" PVC SDR-35 @ S=5.56%		

TREE TABLE

ONSITE						
ID	NAME	DSH	DRIFLINE	Exception Above 24"	Save	Remove
256	Japanese Maple	16.5	10.7	size		16.5
257	Common Buckthorn	27	17.6	yes		27
258	Austrian Black Pine	26.1	18	size	yes	26.1
259	Austrian Black Pine	17.1	17	no		17.1
260	Doug-Fir	30.5	20	size	yes	30.5
261	Common Buckthorn	10.9	11	no		10.9
262	Austrian Black Pine	22.2	22.2	no		22.2
263	Common Buckthorn	11	12.4	no		11
Sub Totals		161.3			78.8	
					Retain	49%

NOTE: 4" PERFORATED FOOTING DRAIN REQUIRED BUT NOT SHOWN ON PLAN, CONNECT WHERE SHOWN ON PLAN

STORM PIPE PVC SHALL BE SDR-35 PVC AT SLOPE=2.00% MINIMUM (TYPICAL) UNLESS OTHERWISE NOTED

IMPERVIOUS SURFACES:  
ROOF AREA (UNDER EAVES) = 3,308 SQ. FEET  
UNCOVERED DRIVEWAY AREA = 659 SQ. FEET  
UNCOVERED PATIO/WALKWAYS = 518 SQ. FEET  
TOTAL IMPERVIOUS AREAS = 4,485 SQ. FEET

LANDSCAPE AREAS NOTE:  
DISTURBED LANDSCAPE AREAS SHALL BE TREATED AS AMENDED SOILS PER DOE FIGURE V-5.3.3, TYPICAL

GRAPHIC SCALE  
1 inch = 10 feet

PERMIT #: 2202-219

PROJECT: 3745 77th Avenue SE  
CLIENT: JayMarc Custom - Pihha Residence  
SHEET CONTENT: UTILITY & TREE PLAN

DESIGNED BY: DLO  
DRAWN BY: VS  
CHECKED BY: DLO

DATE: 06/16/2022  
JOB NO.:  
DWG NO.: 4 OF 6

REVISED PER CITY COMMENTS 2202-219-SUB1  
DATE: 06/16/2022  
REV. NO.: 1